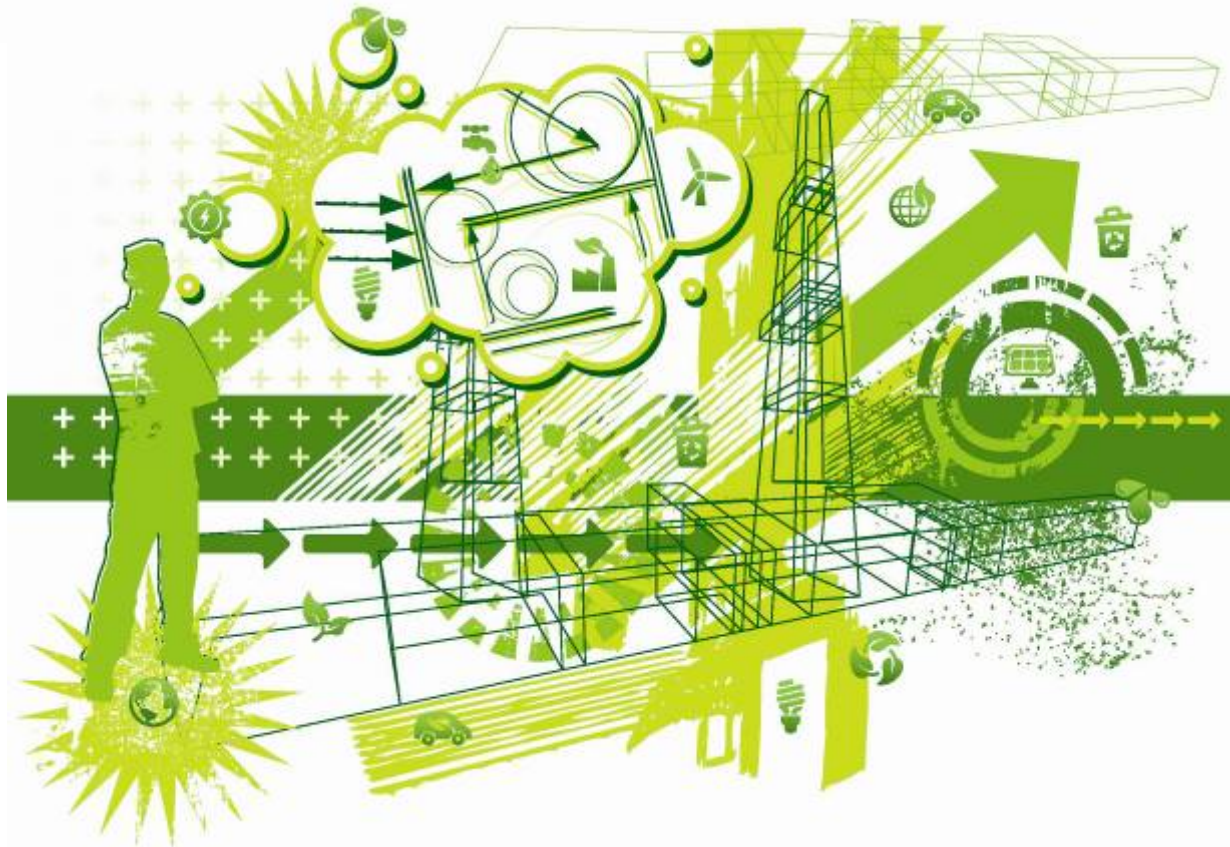




# CREATES



**Construction, Retrofitting, and Energy-Efficiency  
Assessment Training and Employment Systems**

# What is CREATES?

CREATES is a regional partnership funded by a \$3.8 million U.S. Department of Labor *Energy Training Partnership* grant via the American Recovery and Reinvestment Act.

Partners include:

- Community Housing Partners
- Virginia Tech
- NewVA Corridor Technology Council
- New River Community College
- Wytheville Community College
- Virginia Western Community College
- New River/Mount Rogers Workforce Investment Board
- Western Virginia Workforce Development Board



# Regional Demographics

- High poverty and unemployment
- Low educational attainment
- Jobs lost in the transportation manufacturing sector

Since January 2009, 900+ jobs have been lost regionally in the transportation manufacturing sector.



<http://womenonthefence.com/blog/wp-content/uploads/2009/12/0011g.jpg>

# Training in Green Building and Energy Efficiency



CREATES enables workers to gain employment in green occupations by upgrading their skills to increase employability.



# What does CREATES offer?

## For Job Seekers:

- Skills training, degree and certification programs for unemployed and dislocated workers
- CREATES job board and job fairs
- Job search and placement
- Career counseling



# What does CREATES offer?

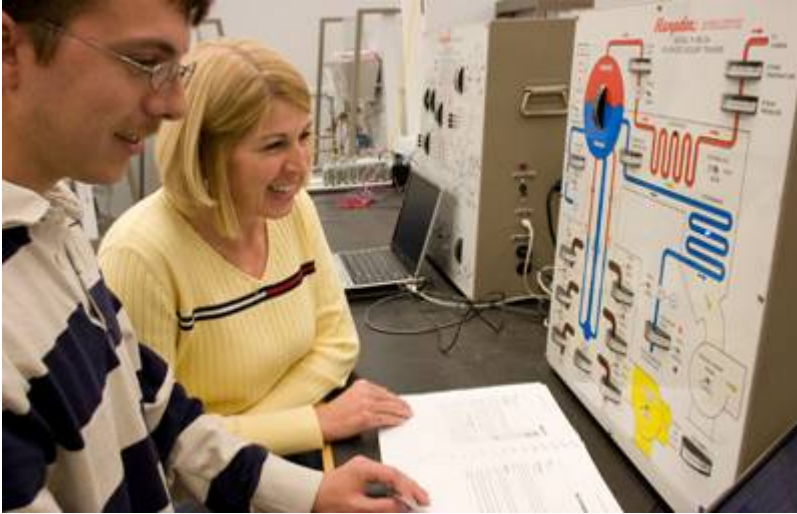
## For Employers:

- Skills training, degree and certification programs for incumbent workers
- Opportunities to hire CREATES program graduates
- CREATES job board
- Educational workshops and job fairs
- Research and outreach for curriculum development



<http://www.createsprogram.org>

# Training Opportunities



- Energy efficiency assessment
- Energy-efficient building, construction, and retrofit services
- Construction technology
- Renewable electric power
- Alternative energy
- Green property management
- Professional certifications

# Tier 1 Curriculum

- 6 to 16 weeks
- Entry level
- Construction

Certificate of  
Completion

Construction  
and retrofitting  
occupations





# Tier 2 Curriculum

- 1-2 semesters
- Career Studies Certificate

- Electrical power
- Wind and solar technology
- Building codes
- Wiring
- Basic carpentry
- HVAC
- Mechanical codes



# Tier 3 Curriculum



- 3-4 semesters
- Career Studies Certificate
- Additional academic credit for career advancement

- Electronics
- Programmable controllers
- Microprocessor applications
- Power monitoring
- Control process integration
- Construction methodology and procedures
- Computer aided drafting and design

# Tier 4 Curriculum



- 2+ years
- Associate's Degree

- Engineering
- Robotics
- Electrical and control systems
- Construction methodology and procedures
- Computer aided drafting, modeling and rendering
- Construction management

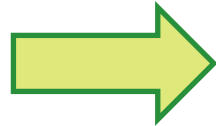
# NRCERT Training



## NRCERT:

- Energy efficiency auditing
- Residential weatherization
- Green Property Management
- Certified Lead Renovator
- HERS Rater
- BPI Certifications in:
  - Building analyst
  - Building envelope
  - Heating
  - Manufactured Housing

# Participant Flow



# Systems Building



# Curriculum Research and Development

Employer roundtable discussions are held to assess regional industry employment needs.



# Projected Grant Deliverables

Total participants served	372
Total beginning training activities	372
Total completing training activities	320
Total that complete training activities and are placed into training-related unsubsidized employment	250
Total number of participants placed in unsubsidized employment who retain an employed status for six months	200

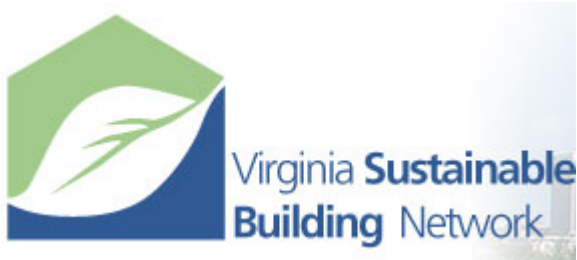


# Participation to Date



- Over 300 individuals have gone through the intake process
- 106 CREATES participants have enrolled in community college classes– an average of 35 per college
- 96 CREATES participants have completed training at NRCERT
- More than 50% of the current participants are incumbent workers

# Recent and New Partnerships



DEBUSK ORIGINALS, LLC



# CREATES Contact Information

Kimberly Strahm  
ETP Grant Administrator  
[kstrahm@chpc2.org](mailto:kstrahm@chpc2.org)  
(540) 382-2002 ext. 3310

Jacquelyn Pontious  
Employer Outreach Specialist  
[jpontious@chpc2.org](mailto:jpontious@chpc2.org)  
(540) 267-4737

Vincent Randall  
CREATES Regional Program  
Specialist (LWIA III)  
[vincent.randall@education.edu](mailto:vincent.randall@education.edu)  
(540) 598.JOBS (5627)

Rhonda Womble  
CREATES Regional Program  
Specialist (LWIA II)  
[rwomble@nrvc.org](mailto:rwomble@nrvc.org)  
(540) 633.6764

<http://www.createsprogram.org>