



COMMONWEALTH OF VIRGINIA

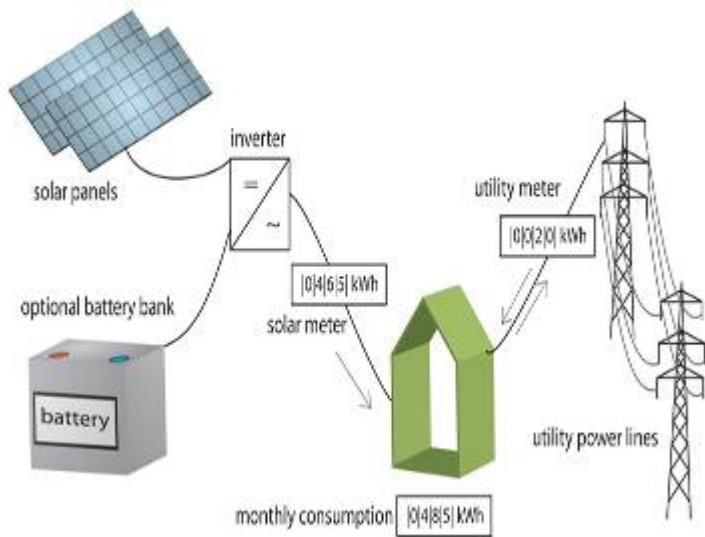
State Corporation Commission

Where are the Markets for Independent Generation?

The Governor's Conference on Energy
October 14, 2010

Tommy Oliver
Tommy.Oliver@scc.virginia.gov

Net Metering



- Virginia Code Section 56-594. Net energy metering provisions
- Net Metering Regulations as currently in place can be found at: <http://www.scc.virginia.gov/pue/rules.aspx>
- Key provisions of the regulations:
 - Provide a notification process from customer to utility
 - Establish minimum requirements for interconnection of customer owned facility to the grid
 - Provide for the transfer of payments
 - Provide protection for the utility in the form of minimum insurance requirements

Distributed Generation



- Commission adopted DG Rules in Case No. PUE-2008-00004
- Copy of Rules can be found at: <http://www.scc.virginia.gov/pue/rules.aspx>
- Key Provision include:
 - Establish rules for interaction between utilities and DG facilities up to 20 MW
 - 3 interconnection paths
 - Establish deadlines
 - Specify fees utilities can charge
 - Establish minimum insurance requirements
 - Contain a number of fill in the blank notification forms for initiating interconnection/studies

Streamlined Filing Requirements for Small Generating Facilities



Puente Hills Landfill Gas-to-Energy Facility produces close to 50 megawatts of electricity.
Photo courtesy: Sanitation District of Los Angeles

- Copy of Filing Requirements can be found at:
<http://leg1.state.va.us/000/reg/TOC20005.HTM.HTM>
- Facilities of 5 MW or less
 - Letter to the Director of the Division of Energy Regulation
 - Comply with all other requirements of federal, state and local law
- Conventional facilities of 50 MW or less and renewable facilities of 100 MW or less
 - Streamline filing requirements established
 - No testimony in support of application required

Large Generating Facilities



- Filing requirements can be found at:
<http://leg1.state.va.us/000/reg/TOC20005.HTM.HTM>
- Conventional facilities greater than 50 MW and renewable facilities greater than 100 MW
- Merchant plants do not have to demonstrate “need”